

# CERTIFICATE OF LOCATION OF GOVERNMENT CORNER

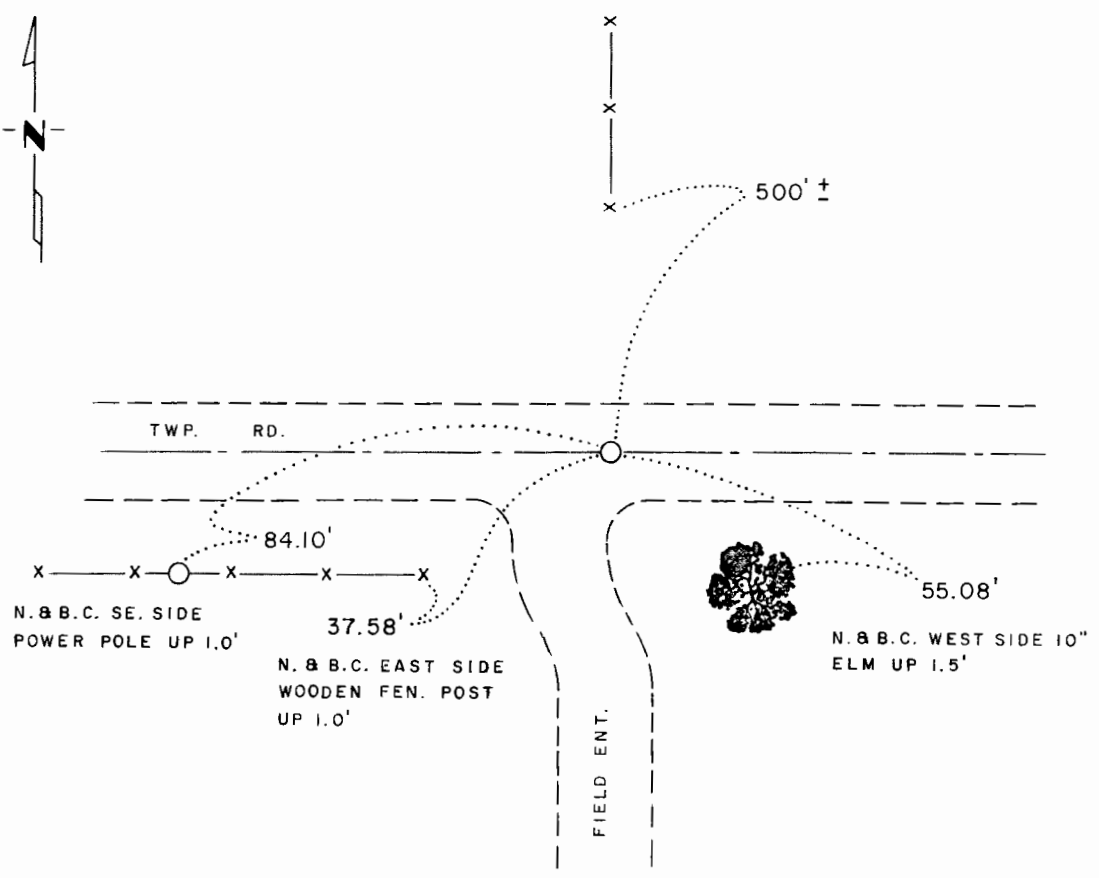
Northeast Corner of Section 9, Township 105, Range 41, 5th P.M.

STATE OF MINNESOTA, County of MURRAY

At the corner location shown on the sketch:

- On 6-21-77 found a 6"x6"x10" Stone With Small Stone Over And a 1"x4" Piece of  
DATE Wood on West Side Down 3.8'
- left monument as found,  lowered monument,  removed monument (explain)
- On 6-21-77 placed a 3/4" Iron Rod Over Stone Down 0.3'  
DATE

## SKETCH OF REFERENCE TIES



Statement of evidence relative to this corner location is on back of page.

I hereby certify that this document and the data contained herein was prepared by me or under my direct supervision.

Larry H. Stevenson 7-3-78  
SIGNATURE DATE

Registration No. 12684  
 Land Surveyor,  Professional Engineer  
 County Surveyor,  County Engineer

OFFICE OF THE REGISTER OF DEEDS  
County of \_\_\_\_\_

I hereby certify that this document was filed in the Reg. of Deeds office at \_\_\_\_\_ .M. on the \_\_\_\_\_ day of \_\_\_\_\_ A.D., 19 \_\_\_\_\_

Register of Deeds \_\_\_\_\_  
By \_\_\_\_\_, Deputy  
DOCUMENT NO. \_\_\_\_\_

Statement of Evidence:

Northeast Corner Section 9 T 105 - R 41

Murray County

This corner was originally established by the U.S. General Land Office survey in 1866. The government notes show corner marked with a wood post set in mound of earth with pits and trench dug around the mound.

In May, 1977 the DNR Bureau of Engineering contacted the Murray County Offices of the Recorder, Auditor and Engineer for corner information.

Information found in the section book at the Engineer's office was a survey by J. W. Woolstencroft of Section 10 in 1901. He shows 2 grey stones in grade at this corner.

The County Engineer's personnel had made a survey in Section 4 in 1973. They said they had dug for this corner with a backhoe, but did not find it.

On June 21, 1977, the DNR hired Sidney Pope to dig for this corner with his backhoe. We found a 6" x 6" x 10" stone with a small stone over and a piece of wood on the west side down 3.8' below road. Evidence of the hole dug by the Highway Department was about 1' north of the old stone. The stone was 6" below an old road, 1'+ south of the centerline road and approximately in line with fence north 500'+. We set a 3/4" x 24" iron rod over the stone at the road surface.

SS

164268

State of Minnesota, }  
County of Murray, }

I hereby certify that the within instrument

was filed in this office for record on the  
7th day of August A.D. 19 81

at 8:30 o'clock A. M., and was duly re-

corded as Microfilm Document No. 164268

Willard W. Ohme

County Recorder